

Self-Formed Meandering and Braided Channel Patterns in a Numerical Model



Research group
Universiteit Utrecht River and delta morphodynamics

Braiding Meandering



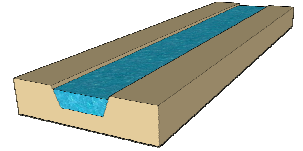
Research question: How can we model the emergence of a specific river pattern?

Filip Schuurman & Maarten G. Kleinhans

f.schuurman@geo.uu.nl

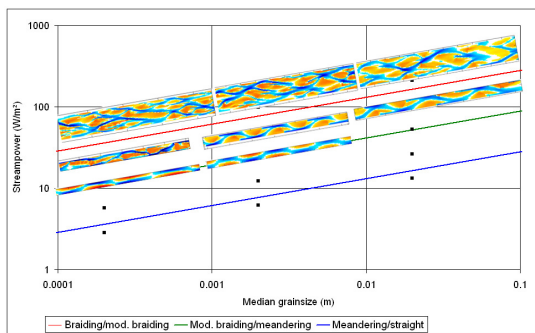
Method

- Comparison between empirical relations, linear stability analysis and numerical modeling
- Empirical relation:
 - River pattern = $f(\text{discharge } Q, \text{ width/depth, bed slope and grainsize})$
- Numerical model:
 - Physics-based
 - 2D-morphodynamic model Delft3D
 - Autogenetic bar development
- Boundary conditions for numerical model:
 - Initial flat bed
 - Discharge, channel width and bed slope based on empirical classification
 - Small random perturbation in discharge and initial bed level

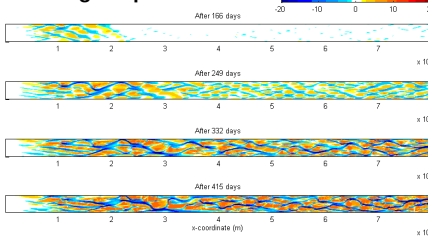


Results

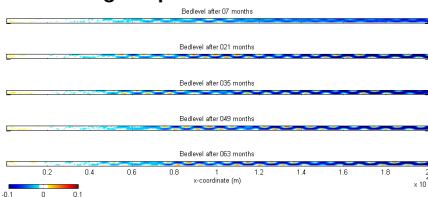
Model vs. empirical relation (Kleinhans & van den Berg, 2010)



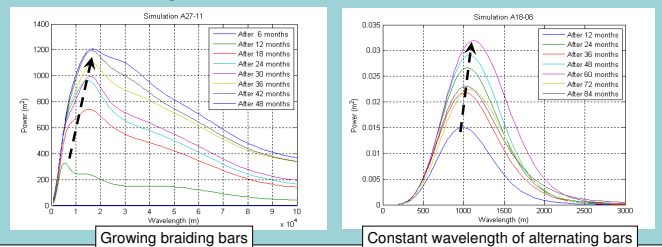
Braiding bar pattern



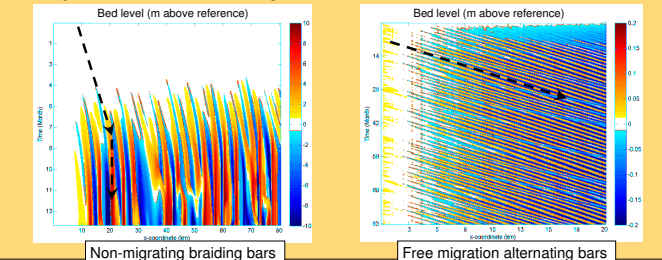
Alternating bar pattern



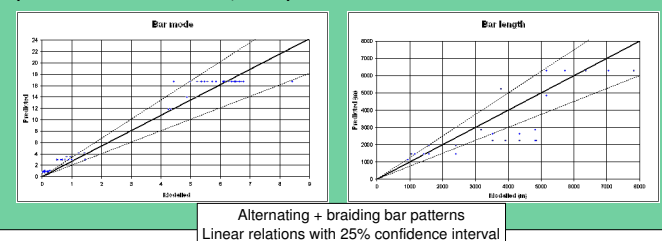
Modeled bar length



Bar dynamics in time and space



Model vs linear stability analysis (Crosato & Mosselman, 2009)



Conclusions

- Concept of bar patterns is well reproduced by Delft3D
- Emergence of braiding bar patterns is conform empirical relation
- Emergence of alternate bar patterns is conform empirical relation
- Alternating bars are not able to initiate meandering by bank erosion:

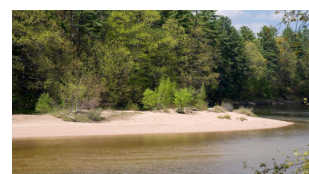


Starting from alternating bars, bank erosion result is a braiding channel pattern

Acknowledgements

- Netherlands Organisation of Scientific Research (NWO) (grant ALW-Vidi-864.08.007 to MGK)
- Technical support from Deltares: C.J. Sloff, E. Mosselman and B. Jagers
- Cooperation with DHV B.V.

Vegetation



- Entrapment of sediment
- Adding strength to bars

