



Fieldwork online GIS-based electronic learning environment for supervising fieldwork

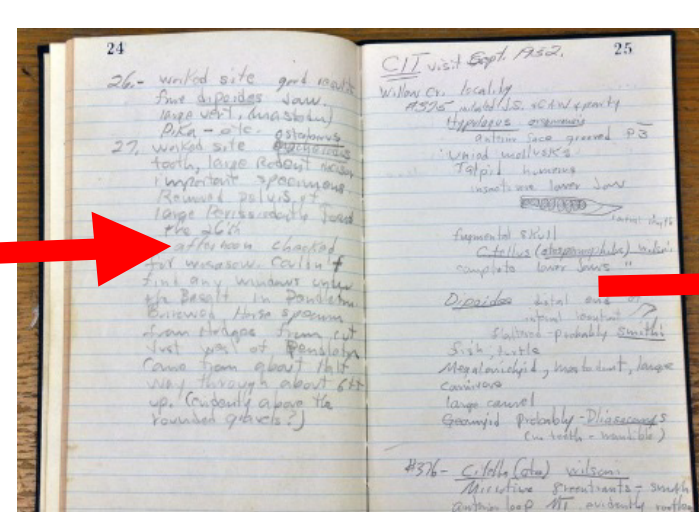
Koko Alberti, Rein Baarsma, **Wouter Marra** (w.a.marra@uu.nl), Derek Karssenberg

Supervising students in distant places can be a logistical challenge and requires a significant time investment of their supervisors. We developed an online application for remote supervision of students on fieldwork.

Try online: <http://fwo.geo.uu.nl> Username: EGU2016, Password: Vienna

Student workflow:

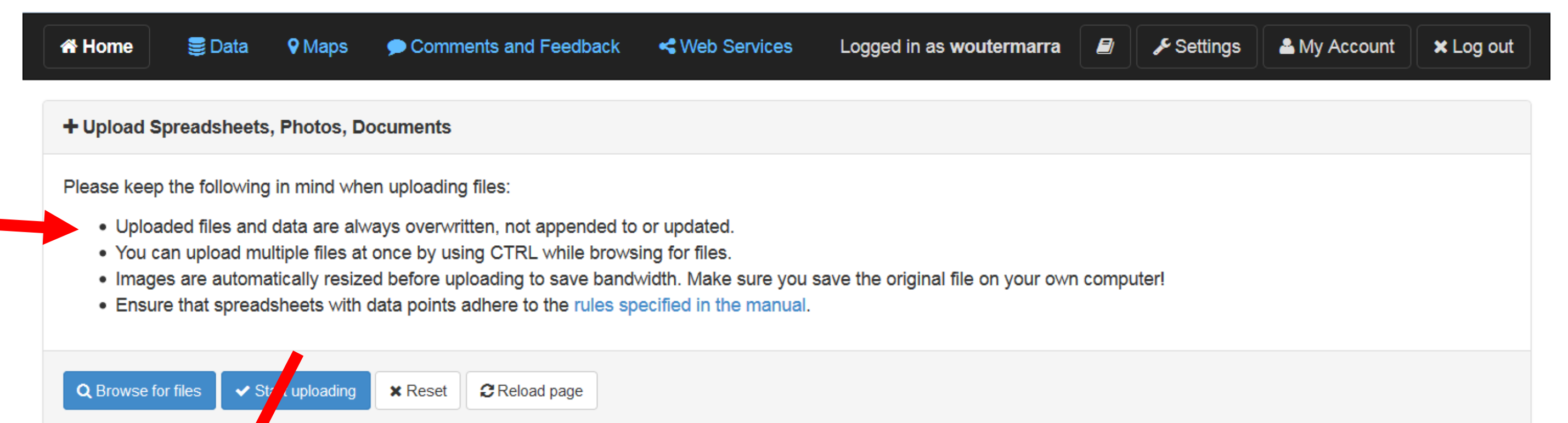
1 - Collect data and GPS-location



Nr	x (epsg:32631)	y (epsg:32631)	location_notes	sketch
1	726937	4936530	Next to road	1, fluv
2	726539	4936203	Next to road	3, river
3	726803	4935603	Next to road	7, bu
4	727050	4936093	Path in field	
5	726043	4935982	Next to road	
6	725912	4936226	Next to road	5, river
7	726102	4936533	Corner of the road	
8	725238	4937038	Corner of the track	
9	725140	4937342	Path over the col	

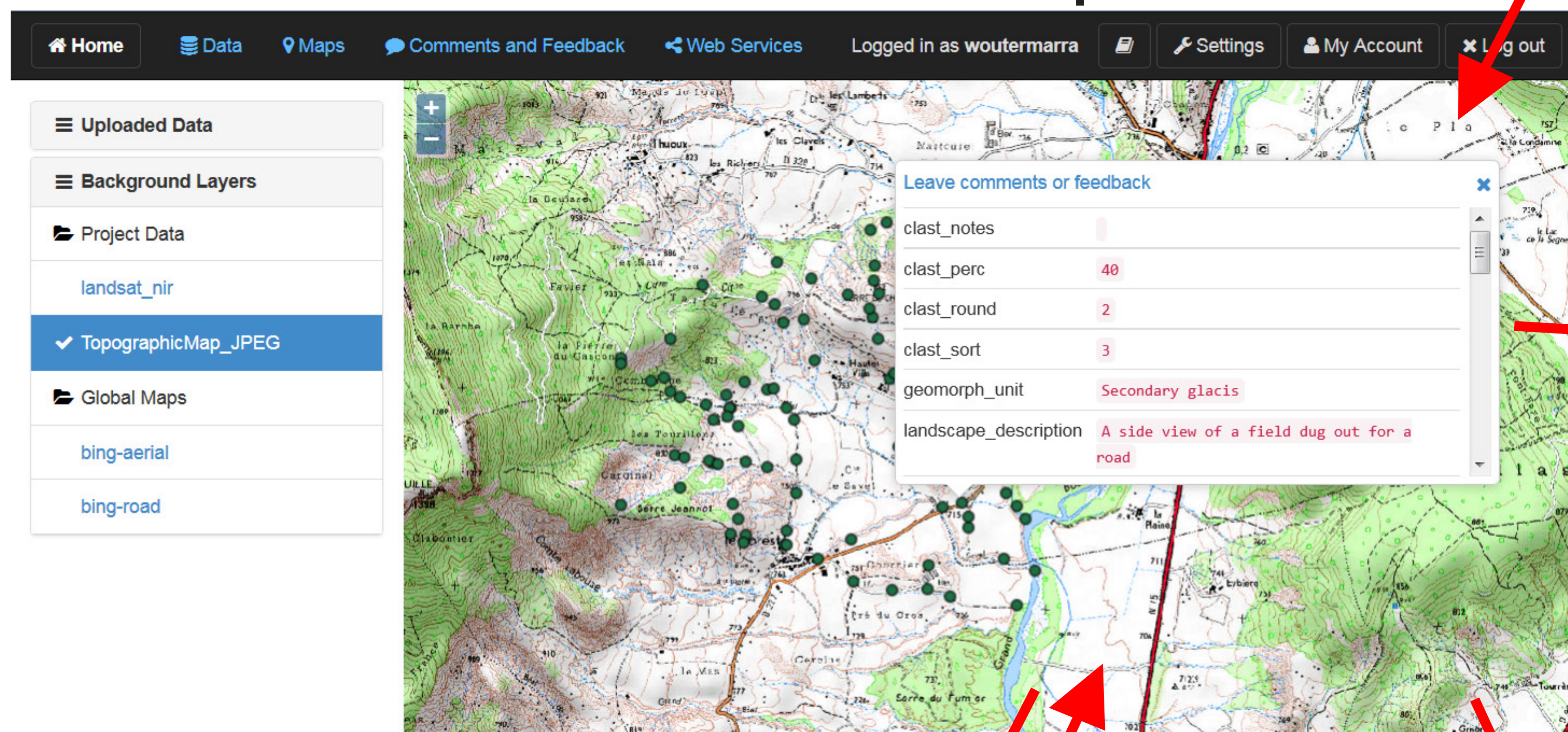
2 - Make digital fieldbook in Excel

3 - Upload Excel data



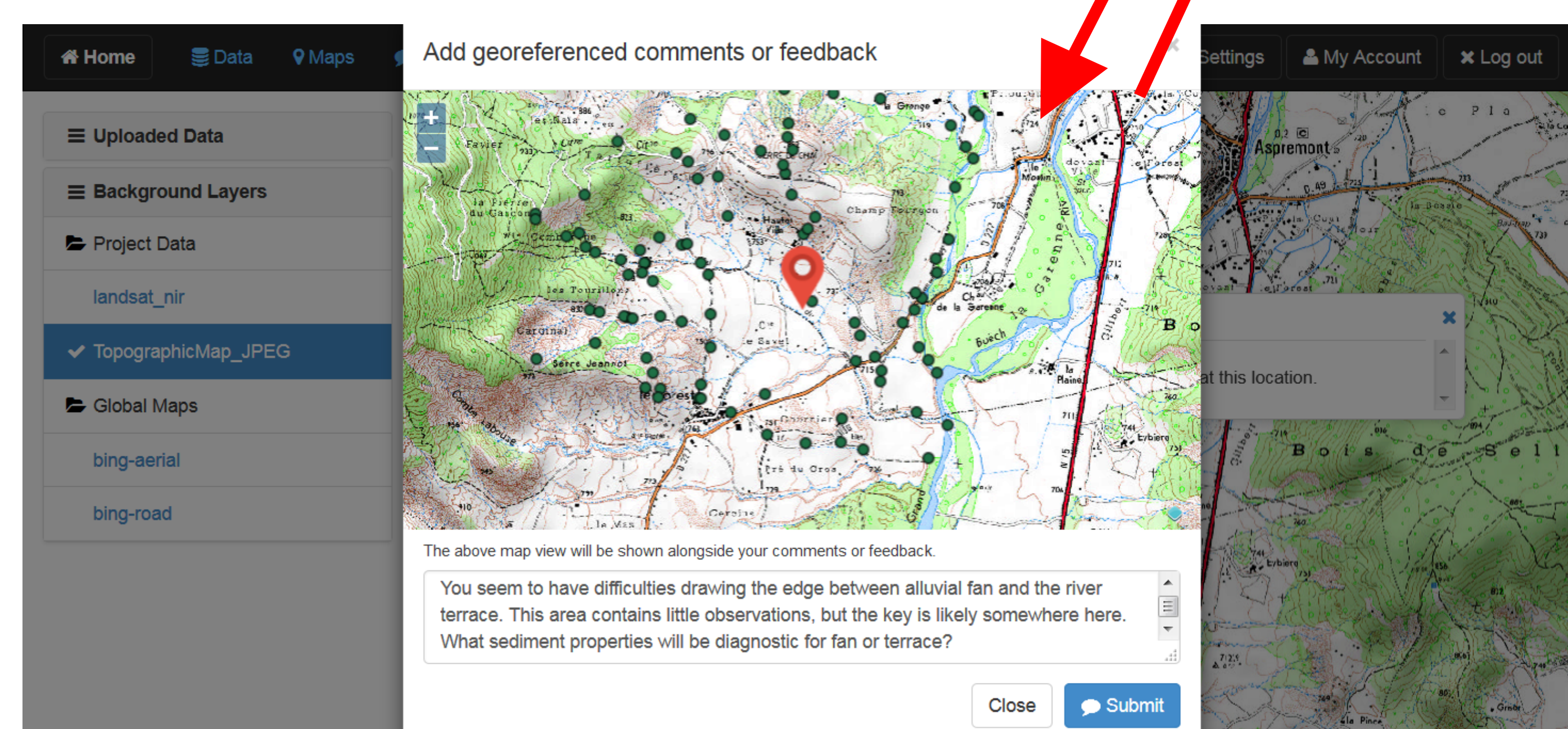
Both students and supervisors see map with fielddata

Photos, sketches and documents can be uploaded too

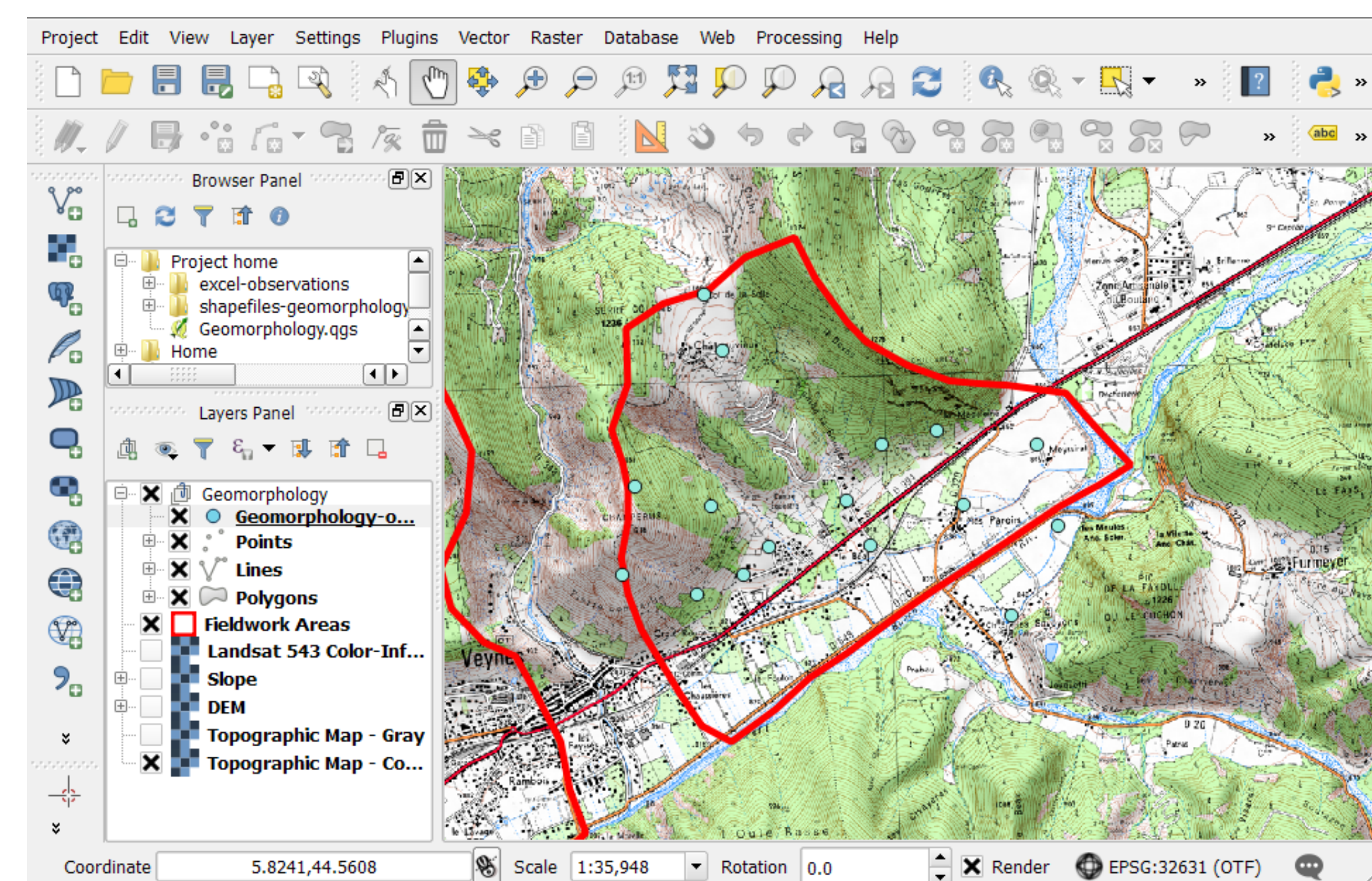


Supervisors workflow:

1 - Review students data and leave feedback



2 - Access data using GIS software & archive



Want to use this?

Let us know! We are happy to help! (FWO is also open-source)

Ideas?

Improvements? Similar experiences? Let us know!

Apps for fieldwork and maps?

What apps are you using? Mobile apps? Webapps? Let's share experiences!

Also available: online spatial modelling tool
see PICO 'Open source large-scale high-resolution
environmental modelling with GEMS' by Baarsma et al., in
session ESS13.5/GI1.5, friday at 15:30

